

SIMOGLAS

Fabrication Guide

Recommendations for Fabrication and Installation

Anti-infection and counter screens made of SIMOGLAS™ are an effective means of protecting against contamination via droplets.

SIMOGLAS can be installed using a variety of methods, including U-rails, frames, clips, screws and fasteners. The material is not notch sensitive, so it will not crack or fracture during assembly.

Welding

Weld-On 2007 works great for this product when fixturing. The bond is as strong as the material when cured.

Cleaning

SIMOGLAS clear thermoplastic sheet can be cleaned daily using standard cleaning products. Follow the instructions on the bottle and make sure to remove all of the product residue with a soft cloth after cleaning. For heavier soiling, isopropyl alcohol can be used.

Suggested Cleaning Products

- Clorox or Bleach
- Dawn Dish Soap
- Diversey Virex Tb
- Gain Ultra Dish Washing Liquid
- Hydrogen Peroxide 3%
- Isopropyl Alcohol 70%
- Lysol Clean & Fresh Multi-Surface Cleaner Sparkling Lemon & Sunflower Essence
- Metrex CaviCide
- Palmolive Dish Soap
- Sporicidin
- Windex Multi-Surface Disinfectant Cleaner
- Windex Original
- Windex Original with Ammonia-D
- Windex with Vinegar
- **Note:** 409 is not recommended as it can cause discoloration

Cutting

These plastic screens can be routed with most saws and cutting tools.

Set-up: Cutting 15 sheets at a time

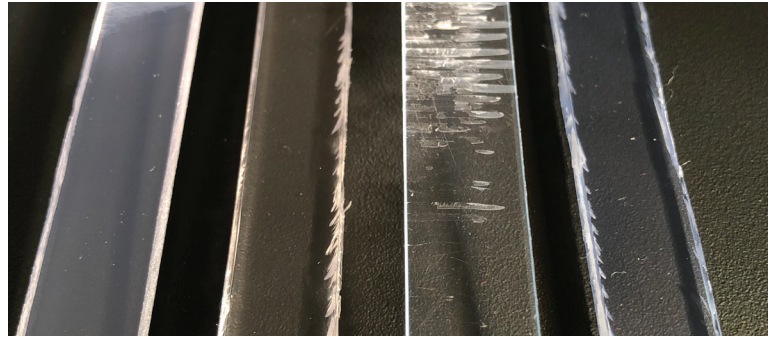
Blade speed: 3500 rpm

Blade spec: 16" diameter blade, 1/8" thick, 60 tooth blade, carbide tips

Source: SCM in Duluth GA. Model is a Galaxy 125 PLM 3800.

*If only cutting one sheet at a time, try a 100 tooth blade for cleaner cut with a faster cross cut speed

*May vary depending on type of machine utilized



Compared to other clear materials, SIMOGLAS (far left) will not show surface crazing as a result of cleaning with strong chemical cleaners, such as isopropyl alcohol.

Chemical Resistance and Cleanability

SIMOGLAS was formulated to have superior chemical resistance compared to other clear materials, especially in installations where stress or tension is applied to the screen. Therefore, it can be cleaned more frequently using strong chemical cleaning products and will maintain its durability and appearance.



i Unsure about a cleaning product? Test on a small sample first. Our technical team will be happy to answer any questions you may have about how to process, clean and use our products.

 sales@simona-america.com

DISCLAIMER AND LIMITATION OF WARRANTY:

All information contained herein is believed by SIMONA AMERICA Industries to be reliable. Typical properties are based on laboratory tests conducted on material samples in accordance with standard test methodology. SIMONA AMERICA Industries makes no express or implied warranty that its products will perform in accordance with the data in all conditions and circumstances. To determine suitability for use, users must test applications under actual operating conditions. As a result, ALL EXPRESS OR IMPLIED WARRANTIES IN CONNECTION WITH SIMONA AMERICA INDUSTRIES PRODUCTS INCLUDING WARRANTIES OF MERCHANTABILITY AND FITNESS FOR A PARTICULAR PURPOSE ARE EXPRESSLY DISCLAIMED. MB 6.19.20

SIMONA AMERICA Group

For questions or to find a local distributor, please contact your local SIMONA AMERICA Group sales representative.

www.simona-america.com/sales